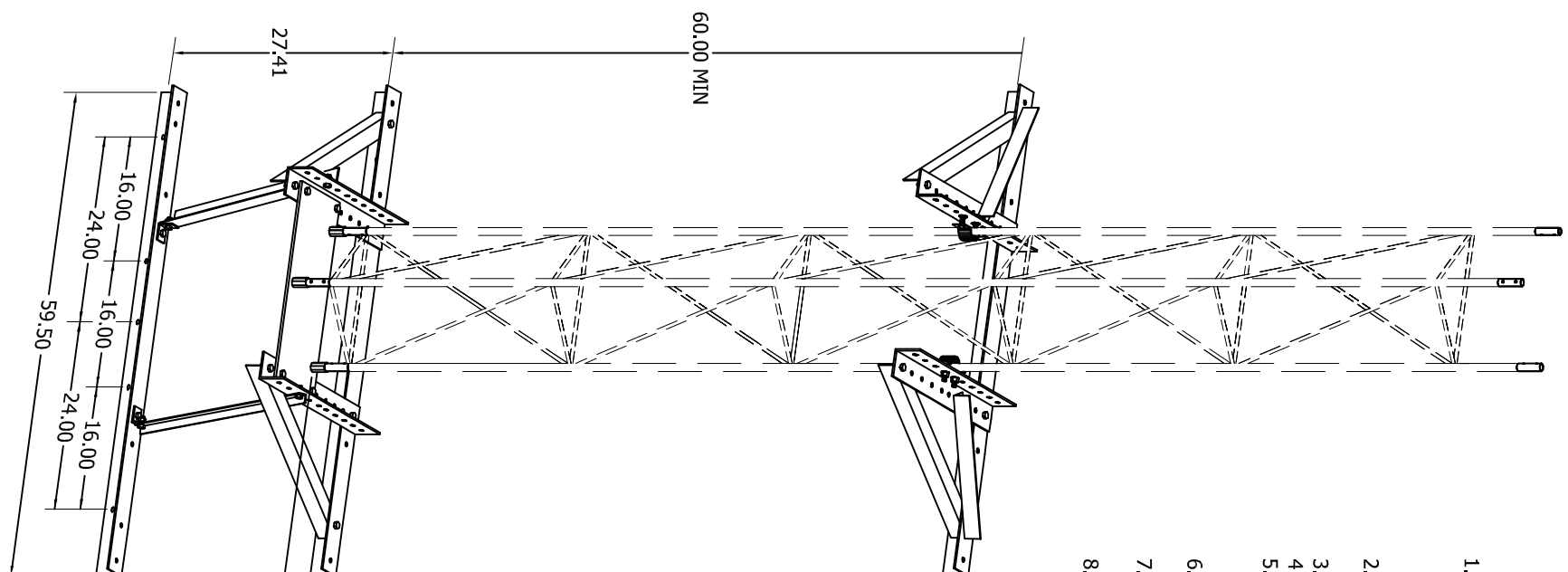
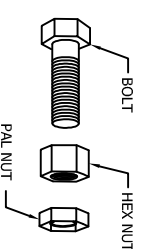


25GWMHDW - BILL OF MATERIAL

ITEM	QTY	PART NO.	DESCRIPTION	ITEM WT.	WEIGHT
1	3	KY1205	ANGLE 2.00x2.00x0.13x59.50 HDG	8.332	24.997
2	6	KY1201	ANGLE 1.50x1.50x0.13x38.25 HDG	3.865	23.191
3	2	KH6772	ANGLE 2.00x2.00x0.13x2.00 HDG	0.267	0.533
4	4	KH6773	ANGLE 2.00x2.00x0.13x33.50 HDG	4.631	18.525
5	2	HB20100	ANGLE 1.50x1.50x0.13x24.75 HDG	2.587	5.175
6	2	D114	CLAMP SADDLE 0.25 3.5 C TO C HDG	0.560	1.119
7	6	210005G	BOLT 3/8x1-1/4 HCS G5 HDG (-16)	0.056	0.336
8	4	210009G	BOLT 3/8x2 HCS G5 HDG (-16)	0.081	0.324
9	18	210017G	BOLT 1/2x1-1/4 HSB A325 HDG (-13)	0.104	1.872
10	2	250008G	WASHER 3/8 HVY HEX HDG	0.008	0.016
11	10	230005	NUT 3/8 HVY HEX HDG	0.040	0.400
12	18	110143	HEX NUT 1/2 (13 UNC) 2H GAL	0.070	1.260
13	10	110159	NUT 3/8 (Jam - Pal) HDG	0.010	0.100
14	18	110160	Nut 1/2 (Jam - Pal) HDG	0.003	0.054
15	1	710208	CARTON FOR FRMS (J517048)	0.500	0.500
16	1	720006	BAG POLY 9.00x13.00x4.00 MIL	0.000	0.000
17	1	740038	STICKER DANGER WATCH WIRE, REG	0.010	0.010
18	1	740224	LABLE 1-1/2"x3" WIDE WHITE (KIMDURA)	0.000	0.000
19	1	FORM932754C-A	SAFETY SHEET (2-SIDED DOCUMENT)	0.100	0.100
20	1	FORMC990121	ASSY DRAWING F/25G WALL MOUNT	0.000	0.000
TOTAL WEIGHT					78.512



- IMPORTANT INSTALLATION NOTES**
1. IT IS THE PURCHASERS RESPONSIBILITY TO VERIFY THAT THE INSTALLATION AND BUILDING STRUCTURE ARE ABLE TO WITHSTAND ALL LOADS IMPOSED BY THE ANTENNA SYSTEM AND MOUNT.
 2. ANTENNA INSTALLATION SHOULD BE GROUNDED BY THE INSTALLER TO MEET ALL APPLICABLE CODES.
 3. ALL PARTS ARE HOT DIP GALVANIZED AFTER FABRICATION. ALL SEALANT TO BE SUPPLIED BY OTHERS, IF REQUIRED.
 4. LOCAL ZONING, BUILDING CODES, AND INSURANCE COMPANIES MAY REQUIRE AN ARCHITECT OR STRUCTURAL ENGINEER'S APPROVAL PRIOR TO INSTALLATION.
 5. INSPECT MOUNT AND ANTENNA INSTALLATION EVERY 6 MONTHS AND AFTER SEVERE WEATHER.
 6. REFER TO ROHN DRAWING #A871302 FOR ALLOWABLE ANTENNA AND TOWER HEIGHT.
 7. HOLES PROVIDED IN MOUNTING ANGLES ARE 1 1/16" DIAMETER FOR USE WITH HDG 5/8" THREADED ROD, PROVIDED BY OTHERS.
 - 8.



TYPICAL PAL NUT INSTALLATION
INSTALL WITH OPEN SIDE
AWAY FROM HEX NUT

5.94 TO 19.94
(WALL TO TOWER)

ADJ. IN 3.50
INCREMENTS

BILL OF MATERIAL

ITEM	QTY	PART NO.	DESCRIPTION	WEIGHT
1	1	25GWMHDW	HARDWARE FOR 25GWM WALL MOUNT	78.512
2	1	KH6775	BASE PLATE W/STUBS F/25G WALL	16.761
TOTAL WEIGHT				95.273

FILE NO. Standard-25G

REV.	DESCRIPTION	DWGN	CHK	APP
3	REDRAWN INTO AUTOLOAD FORMAT	DLJ	JMS	HAA
DATE: Jun/25/2007				

DWG REFERENCE



6718 WEST PLANK ROAD
PEORIA, IL 61604
TOLL FREE 800-727-ROHN

THIS DRAWING IS THE PROPERTY OF ROHN. IT IS NOT TO BE REPRODUCED, COPIED OR TRACED IN WHOLE OR IN PART WITHOUT OUR WRITTEN CONSENT.

**MOUNTING
25G WALL ASSEMBLY**

DWGN:	J1B	CHK'D:	B.K	DATE:	Jun/13/2000
ENGR:					
DRAWING NO:	C990121	REV:			3